

**BLT**  
CONSTRUCTION SERVICES



## HEALTHCARE INITIATIVES

## PANDEMIC RESPONSE SOLUTIONS



FOR MORE INFORMATION CONTACT  
[EMRESPONSE@BLTCONSTRUCTION.COM](mailto:EMRESPONSE@BLTCONSTRUCTION.COM)



# BUILDING FOR A PANDEMIC

SUPPORTING  
CANADIAN  
HEALTHCARE  
WITH INNOVATIVE  
SOLUTIONS FOR  
PATIENT CARE.

BLT Construction Services,  
in partnership with Sprung  
Structures, is leading the  
design-build of Pandemic  
Response Units across  
Canada to support  
healthcare professionals  
and patients during the  
COVID-19 pandemic.



BURLINGTON

# JOSEPH BRANT HOSPITAL

REGIONAL PANDEMIC  
RESPONSE UNIT

In March, Joseph Brant Hospital (JBH) in Burlington contacted BLT and Sprung Structures about an immediate building solution to proactively respond to the COVID-19 global pandemic – the first structure of its kind in the province.

In just 14 days, the 8,250 square-foot Pandemic Response Unit was constructed on JBH grounds by BLT and our team of dedicated consultants, subcontractors, suppliers, and vendors. Insulated for year-round performance, this modular unit delivers an oxygen supply system in a negative pressure environment and connects to the hospital via an enclosed walkway.



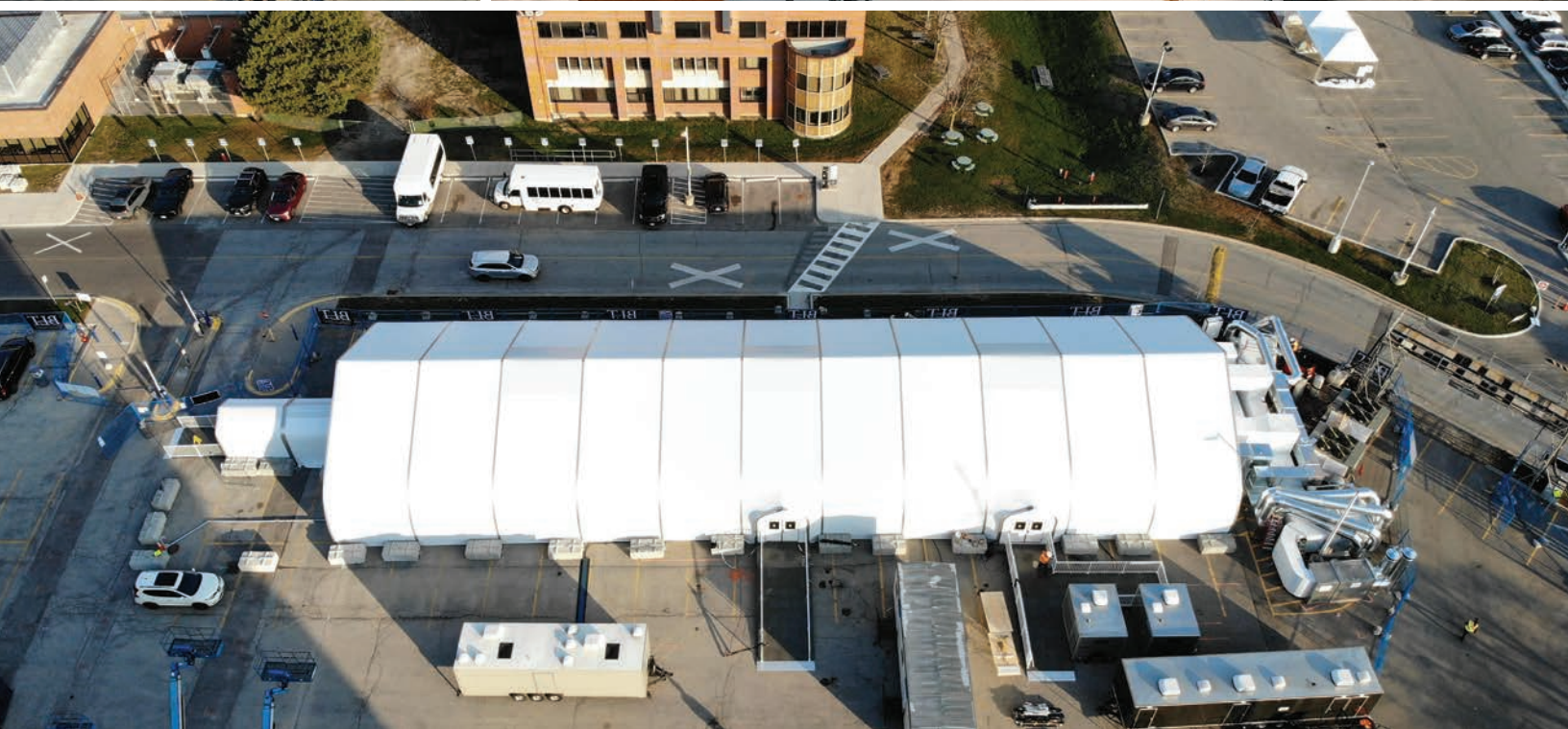
MISSISSAUGA

## TRILLIUM HEALTH PARTNERS

### TEMPORARY PANDEMIC RESPONSE UNIT

As part of Trillium Health Partners' Pandemic Response Plan, BLT led the design-build of a Pandemic Response Unit at Mississauga Hospital in April.

This community resource was built over the course of 14 days on the grounds of Mississauga Hospital to increase capacity for the potential surge of COVID-19 patients. With the unit located in the hospital's south parking lot, this project required an innovative site approach to optimize access and connectivity to the hospital. This unit is insulated for all-season use, with dedicated washroom facilities.



BARRIE

# ROYAL VICTORIA REGIONAL HEALTH CENTRE

REGIONAL PANDEMIC  
RESPONSE UNIT

In preparation for a potential second wave of COVID-19 cases, BLT recently completed the all-season Regional Pandemic Response Unit located at Royal Victoria Regional Health Centre (RVH) to serve the communities of Barrie and the Simcoe County region.

This fully functional health unit has a dedicated oxygen system and provides washroom and bathing facilities for patients through an interconnected unit.



# TURNKEY BUILDING SOLUTION



RAPID BUILD  
STRUCTURES THAT  
OFFER AN UNMATCHED  
LEVEL OF VERSATILITY,  
LONGEVITY, AND  
PORTABILITY.

## SPECIFICATIONS

Sprung structures are a quick build, performance architectural solution.

» With R-25 insulation capabilities, they are highly capable in, and comfortable for, Canadian winters.

» Performance architectural membrane prevents solar gain, is energy efficient, and suitable for hospital-grade applications. The standard Polyurethane Architectural Membrane has a 15-year pro-rata guarantee, with the option to upgrade to a DuPont™ Tedlar® Membrane for added longevity, further colour choices, and a 25-year pro rata guarantee.

» Rust-proof and long lasting aluminum military grade substructure comes with a 50-year pro-rata guarantee from Sprung.

## KEY BENEFITS

» Our experienced team at BLT can provide expert site analysis, planning, complete design services, and manage all elements of the project.

» Our solution can provide you with a rapid deployment strategy with an expertly led installation process.

» Highly customizable structures with options for insulation, power plants, mechanical systems, and lighting options.

» Potential for accelerated tax depreciation compared to traditional buildings.



# QUEUEING TUNNELS



## 10' x 120' QUEUEING TUNNEL

\*For illustrative purposes only. Size and layout will be configured per requirements.

BLT sprung

**Maintain physical distancing between visitors waiting to enter COVID-19 assessment centres with a Screening Tunnel.**

Provides comfortable all-season shelter for the Canadian climate, with R-25 insulation capabilities.

Screening tunnels seamlessly integrate into hospital building facilities so visitors can enter directly into main building assessment centres.



**BLT**  
CONSTRUCTION SERVICES



FOR MORE INFORMATION CONTACT  
[EMRESPONSE@BLTCONSTRUCTION.COM](mailto:EMRESPONSE@BLTCONSTRUCTION.COM)

