



A COVID-19 Healthcare Response Strategy

FOR REMOTE INDIGENOUS COMMUNITIES IN CANADA

FOR IMMEDIATE 24-HOUR RESPONSE CONTACT: EMRESPONSE@BLTCONSTRUCTION.COM

In partnership with:





IN THIS TOGETHER

In our lifetime, the world has never experienced a higher need for health security. The COVID-19 pandemic has drawn us all together in the common challenge of protecting our families, our elders and the most vulnerable that walk among us. It has become clear that these challenges will remain present and real for some time to come.

The leaders of our communities have been called upon to prepare timely, responsible, effective and sustainable plans that will see us safely through this time of health crisis. In response, Canadians have proudly shown our support and collective will to make sacrifices and invest in one another.

We believe that the challenges faced by remote Indigenous communities throughout our country during the COVID-19 pandemic are very unique and significant. Our team believes that these challenges must be met with an immediate humanitarian response that is based in the spirit of collaboration, dignity and understanding.



OUR SOLUTION

In partnership with Sprung Structures, BLT Construction Services has developed a Rapid Response solution that addresses the limited resources available to manage an outbreak of COVID-19 within tightly knit northern communities.

Our strategy provides your community with an effective, turnkey building solution that delivers immediate and complete medical infrastructure in a time of great health insecurity.

Our strategy provides you with a premium, multipurpose building solution that offers an unmatched level of versatility, portability and longevity. The system is specifically designed and packaged for rapid deployment and can be set up with minimal labour, equipment and tool requirements.

Each technical component and building structure is engineered to meet local building codes for both safety and environmental impact. These buildings are virtually maintenance free and constructed using the highest quality materials guaranteeing decades of future use.

The environmental solution presented here seeks to ensure that the job of providing Bedside Care, Isolation and Accommodation can be delivered in a culturally safe way, where First Nations families and elders live.

This building solution is a critical investment in the immediate health and safety of your community. With the ability to transition into a valuable community asset long after the pandemic has passed, our proposed solution prioritizes longevity and environmental sustainability.



KEY BENEFITS

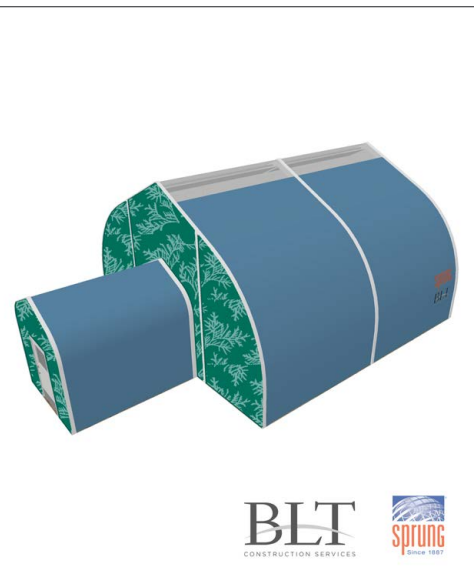
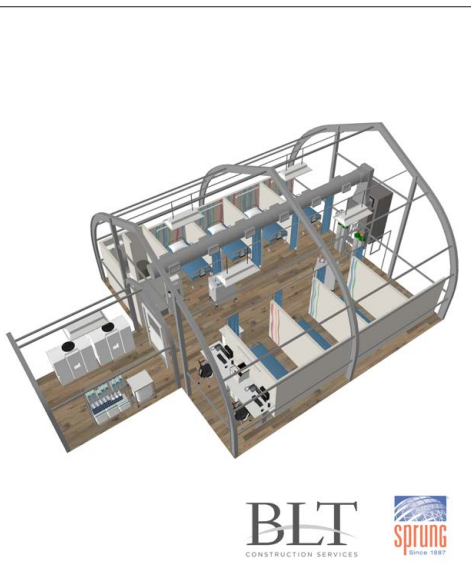
- » Our professional team can provide expert site analysis, planning and complete design services.
- » Our solution can provide you with a rapid deployment strategy with an expertly led installation process.
- » We are offering a high quality structure that is engineered to withstand the demanding nature of the northern climate and environment.
- » These buildings are engineered to provide an unmatched level of safety and durability.
- » Highly customizable structures with options for insulation, power plants, mechanical systems and lighting options.



RAPID RESPONSE BUILDING SOLUTION

Sprung Structures are prefabricated structures that are rapidly deployable by air or ground to remote locations from a centralized logistics centre.

These structures can be erected quickly, are easily dismantled, and can be repurposed and reused. This is a turnkey solution with installation options available.



CAPABILITY IN NORTHERN CLIMATES

Sprung Structures are ideal for northern climates with R-25 insulation capabilities, plus a host of fit-out options for medical use including power, and HVAC with negative pressure systems.

The structure's performance architectural membrane is anti-microbial and suited for medical applications.



YOUR TRUSTED BUILDING PARTNER

For the last 18 years, BLT has partnered with Sprung. This long term partnership means that we are experts at deploying and building Sprung Structures for different geographical sites and at different scales.

First Nation company Alpha Sky has joined our partnership to deliver this premium building solution within First Nation communities across Canada. Our partners at Dillon Consulting will provide civil engineering for site works design, and mechanical and electrical engineering for site servicing and integration with nearby facilities.

Please [click here](#) to learn more about how BLT and Sprung have helped the Joseph Brant Hospital community through this pandemic. We have also assisted other metropolitan communities in urban and regional centres.



SCALABILITY + REUSE

BLT has the ability to execute Sprung projects at multiple scales, with the capacity to accommodate 200-300 hospital beds.

The interiors for these units may be modified to accommodate multiple setups, from mobile medical units to fully enclosed isolation units.

Sprung Structures can be relocated, moved, and repurposed for future applications within the community.



MOBILE MEDICAL UNIT

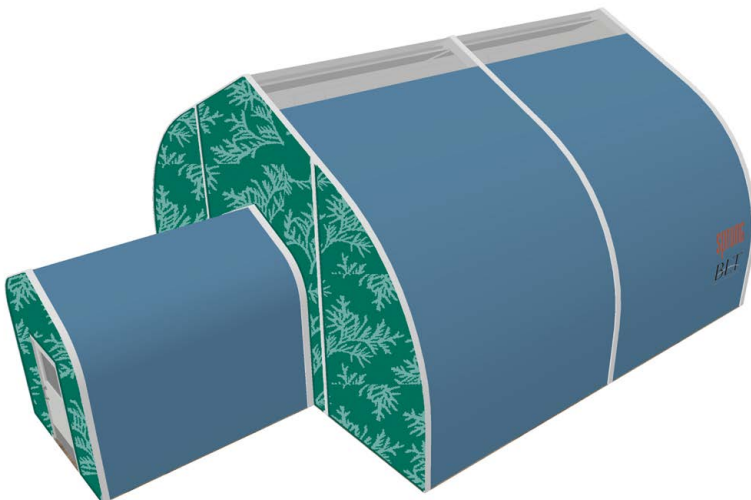


Mobile
Medical Unit

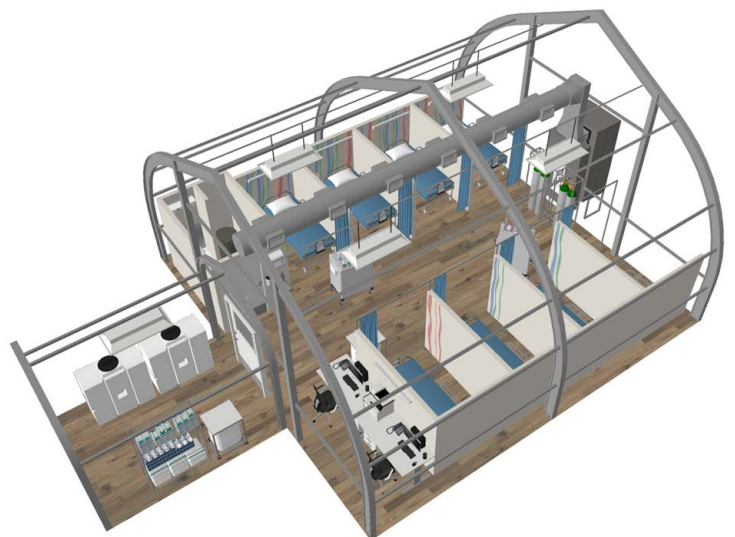
Mobile Medical Units support the heightened care needs of the community by providing additional capacity for COVID-19 patients, or patients requiring other general care.

As scalable health care facilities, these units are designed and built based on community-specific and site-specific requirements. This means:

- » Customizable structure sizes for appropriate bed capacity.
- » Scaled options for oxygen delivery, from oxygen cylinders to on-site oxygen supply systems.
- » Power demands can be met by remote generators or through connection to available power.
- » Water can be accessed through self-contained water system, or connected to existing water supply infrastructure.
- » Customizable exterior building colours to complement existing community environmental design.



30' x 30' MEDICAL UNIT



30' x 30' MEDICAL UNIT



MOBILE MEDICAL UNIT



30' x 30' MEDICAL UNIT



30' x 30' MEDICAL UNIT



30' x 30' MEDICAL UNIT



AVAILABLE FEATURES FOR 30' x 30' MOBILE MEDICAL UNIT



BLT
CONSTRUCTION SERVICES

sprung
Since 1987

SPRUNG STRUCTURE

The Sprung Structure is available with R-25 insulation and a vestibule with two (2) single, insulated, metal doors with half lites.

Daylight panels are also available to bring natural light into the space.

PLUMBING PACKAGE

- » Hand Wash Station
- » 3 Piece Bathroom including a Shower/Utility Basin
- » Hot Water Tank
- » Holding Tank for Potable Water as well as Grey and Black Water Tanks, if existing local water, sewage/drainage systems are not available.

FURNITURE, FIXTURES & EQUIPMENT

- » Nursing Station C/W Desk, Chairs and Task Lights
- » Storage Units
- » Head Walls C/W Lights, Shelf, Pre-Wired for Receptacles and Switches
- » Separate Fridges for Medicine and Food Storage
- » Curtains and Curtain Rods
- » Mobile Carts

ELECTRICAL

- » Lighting at each Headboard and Nursing Station
- » Overhead Lights provided and wired
- » Panel Wired Pigtail for Generator or Grid Power
- » HVAC Wiring and Controls

HOSPITAL BEDS

- » Beds available in various price points and accessories for various needs.

HVAC

- » HVAC including Heating Cooling C/W Duct Work and Controls
- » Oxygen Tanks or Hard Piped Oxygen Systems

FLOOR ASSEMBLY

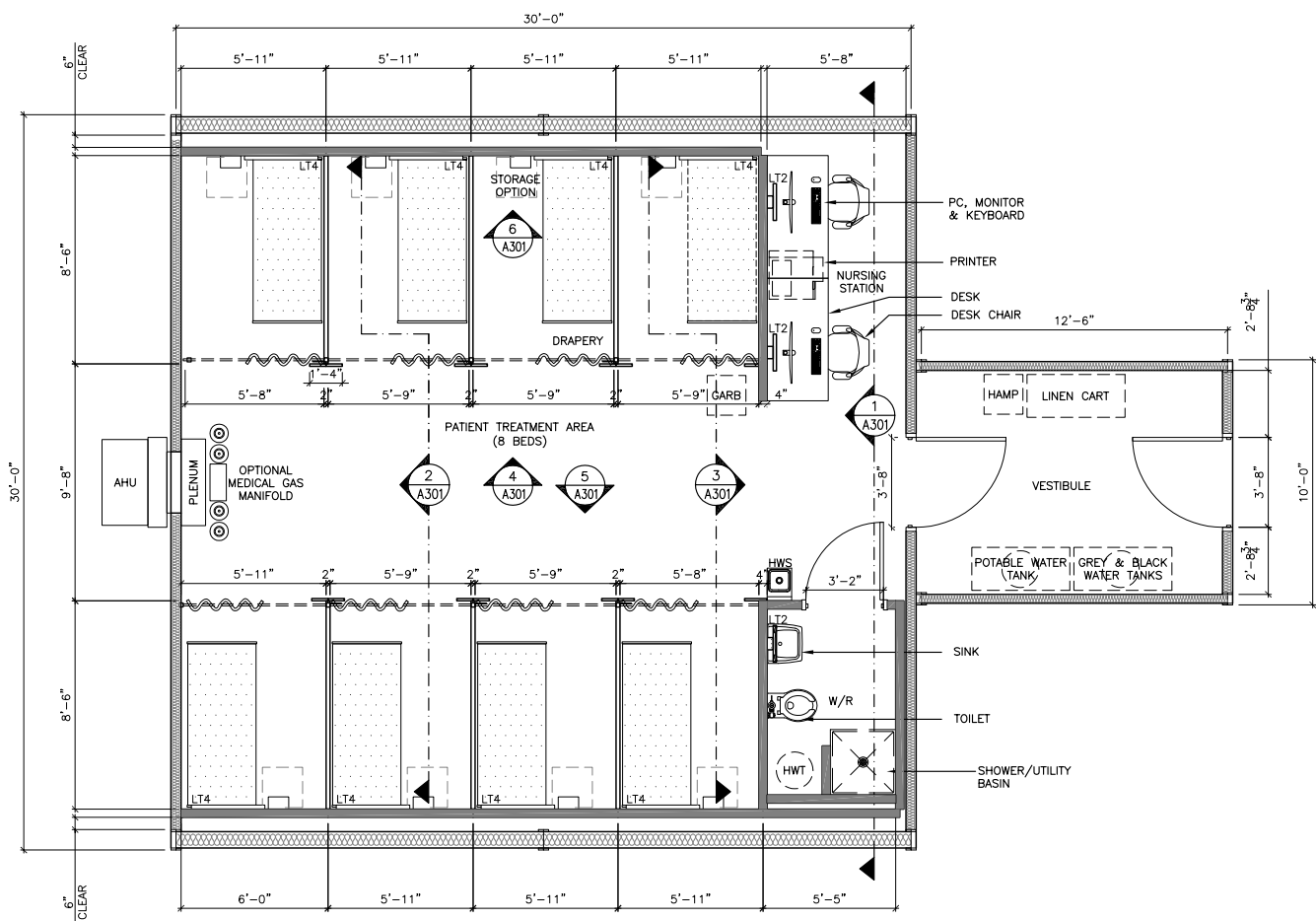
- » Sprung Floor Membrane heat sealed to side wall of Structure for weather tight installation.
- » 3" R-24 Metal Clad Floor Panels, Polyurethane Core (Class A)
- » Click Strip Floating Floor System

GENERATOR

- » Diesel Generator, if existing electrical service is not available.

MOBILE MEDICAL UNIT

30' x 30' MEDICAL UNIT
(8 BEDS)

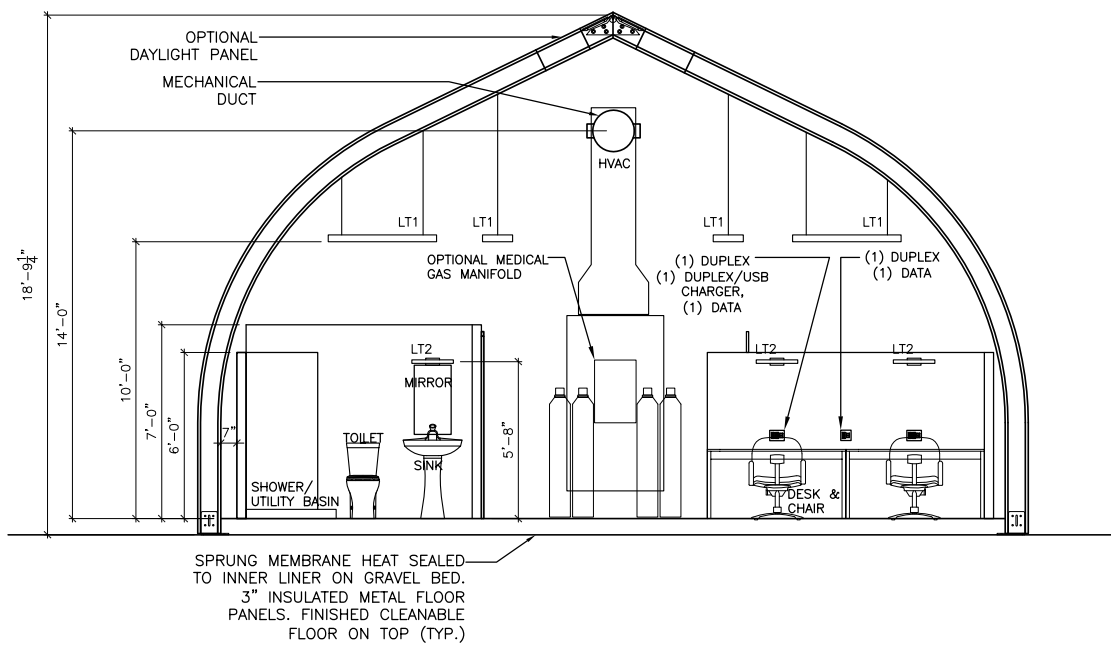


OVERALL FLOOR PLAN

**30' x 30' MEDICAL UNIT
(8 BEDS)**

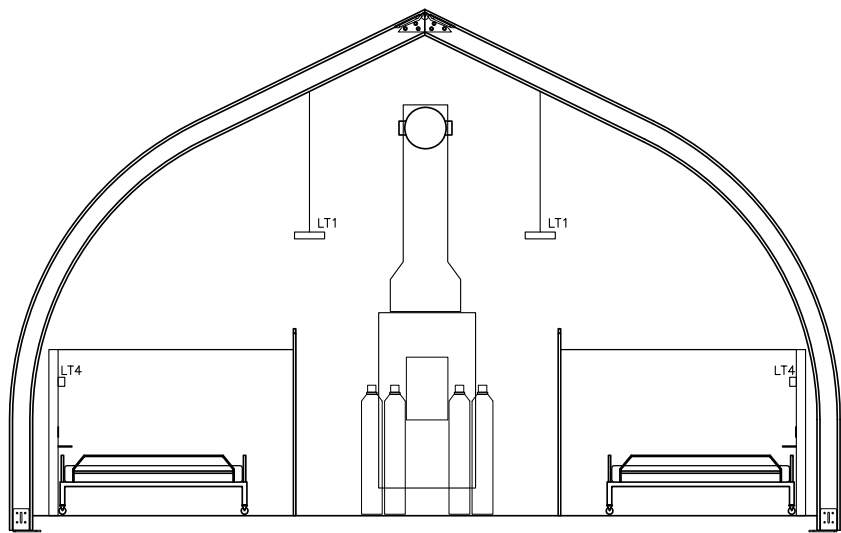


MOBILE MEDICAL UNIT



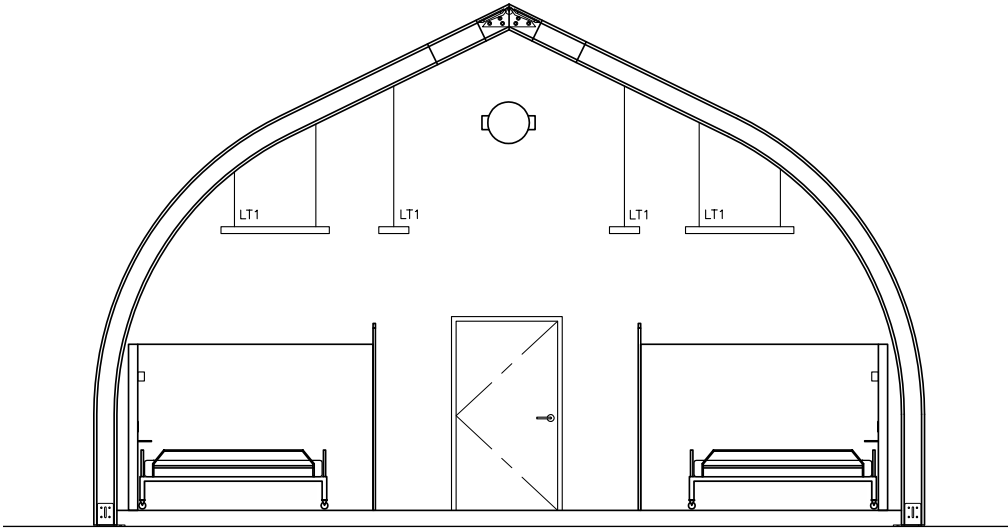
SECTION

30' x 30' MEDICAL UNIT
(8 BEDS)

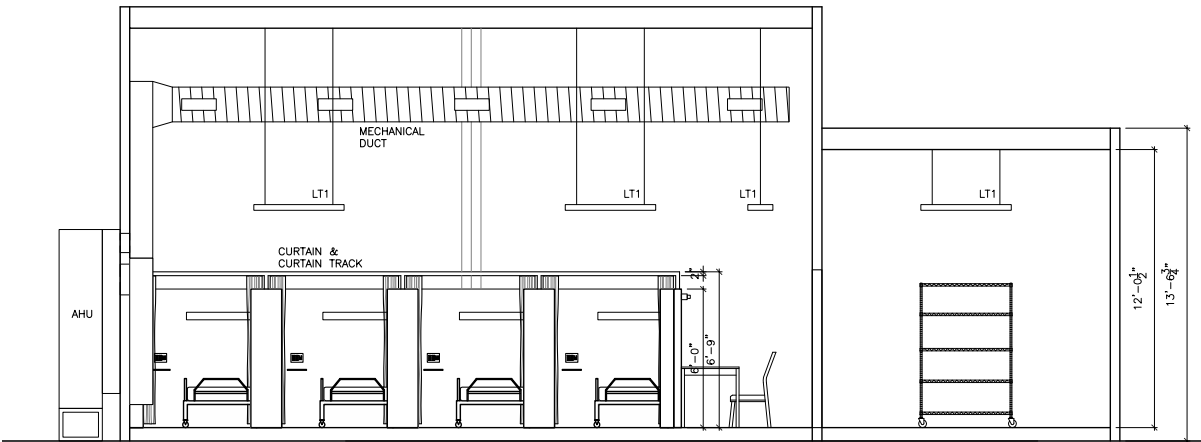


SECTION

MOBILE MEDICAL UNIT



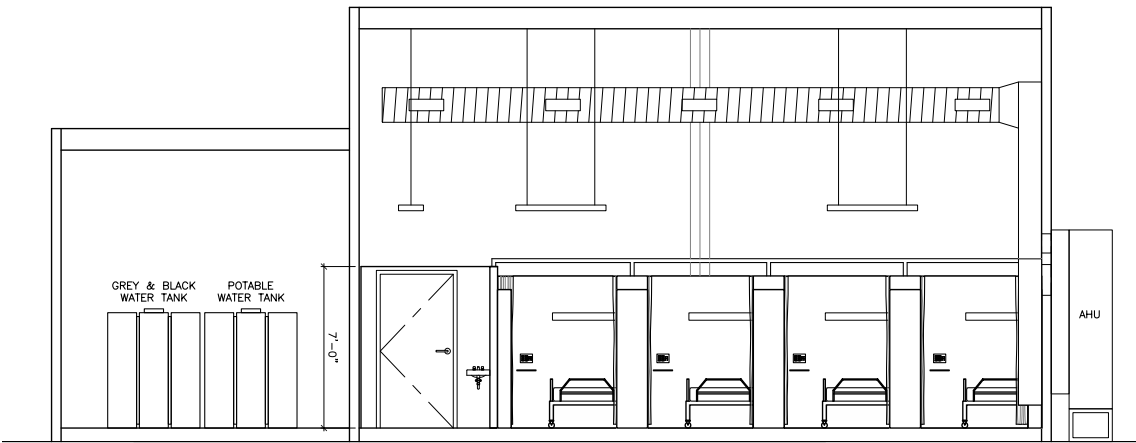
SECTION



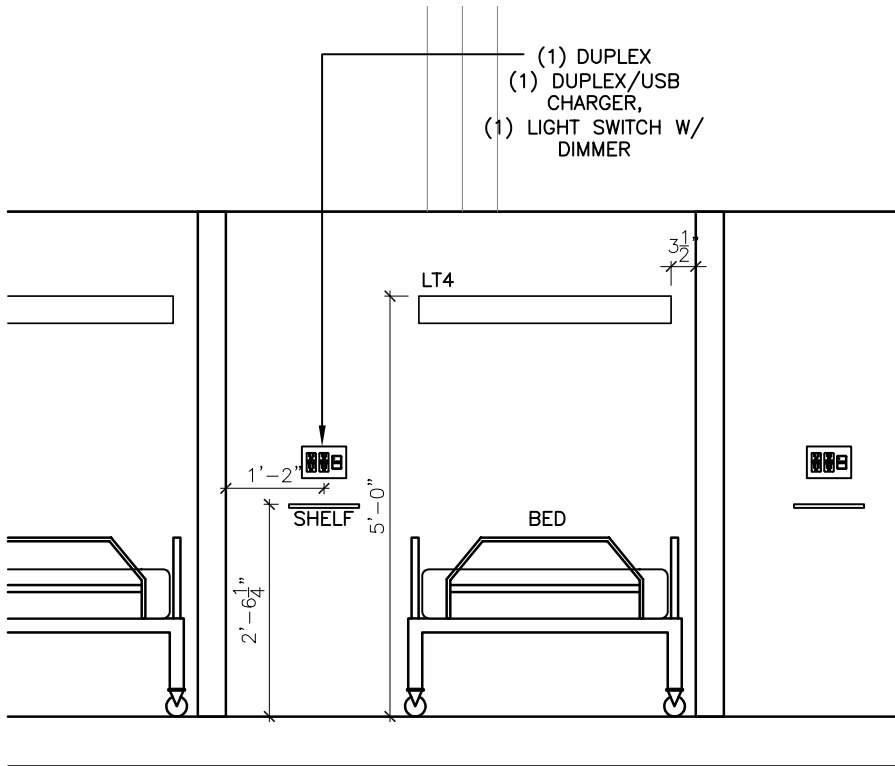
SECTION

30' x 30' MEDICAL UNIT
(8 BEDS)

MOBILE MEDICAL UNIT



SECTION



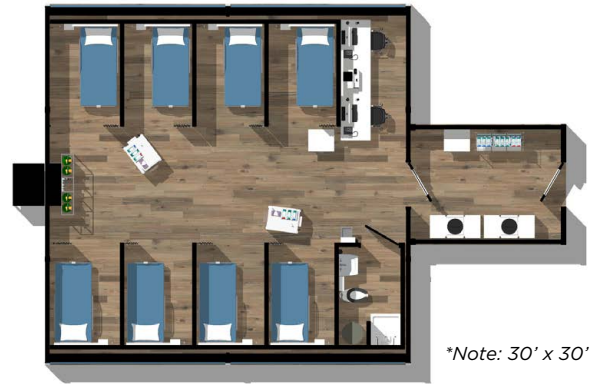
DETAIL

30' x 30' MEDICAL UNIT
(8 BEDS)

OPTIONAL LAYOUTS FOR MOBILE MEDICAL UNITS

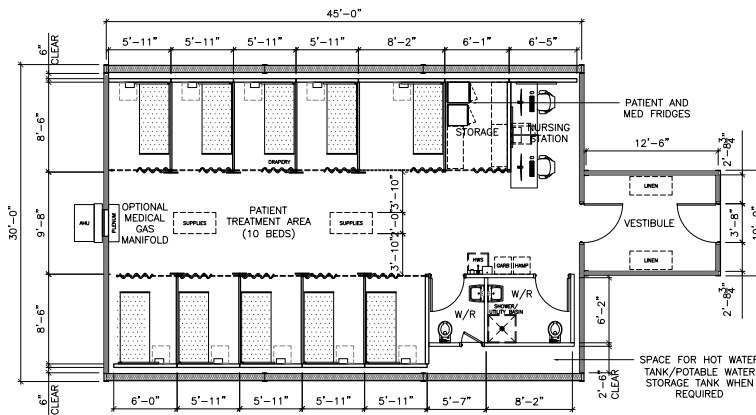
Medical units can be configured in multiple sizes, and with different bed spacings. For illustrative purposes, the following unit sizes are shown here:

- » 30' x 45' unit with 10 bed capacity
- » 30' x 60' unit with 14 bed capacity
- » 30' x 75' unit with 20 bed capacity

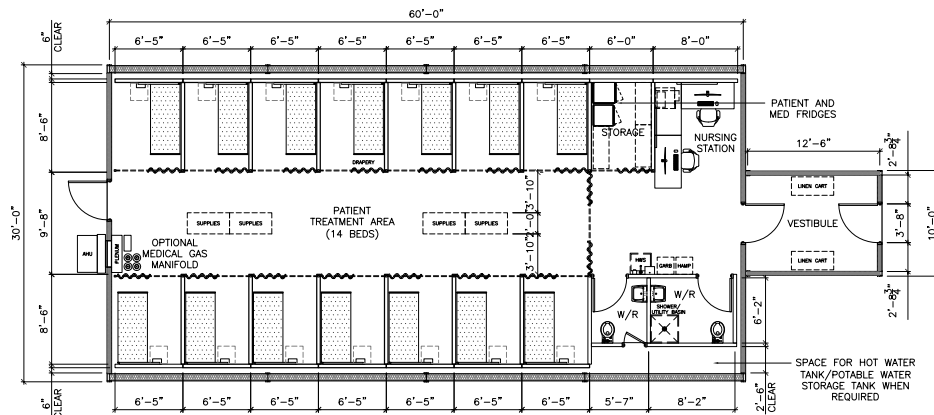


*Note: 30' x 30'

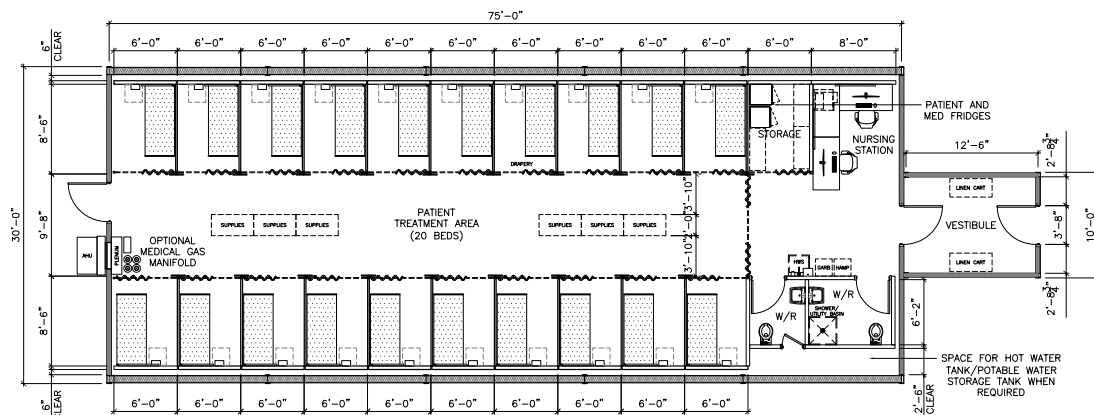
30' x 45' MEDICAL UNIT
(10 BEDS)



30' x 60' MEDICAL UNIT
(14 BEDS)



30' x 75' MEDICAL UNIT
(20 BEDS)



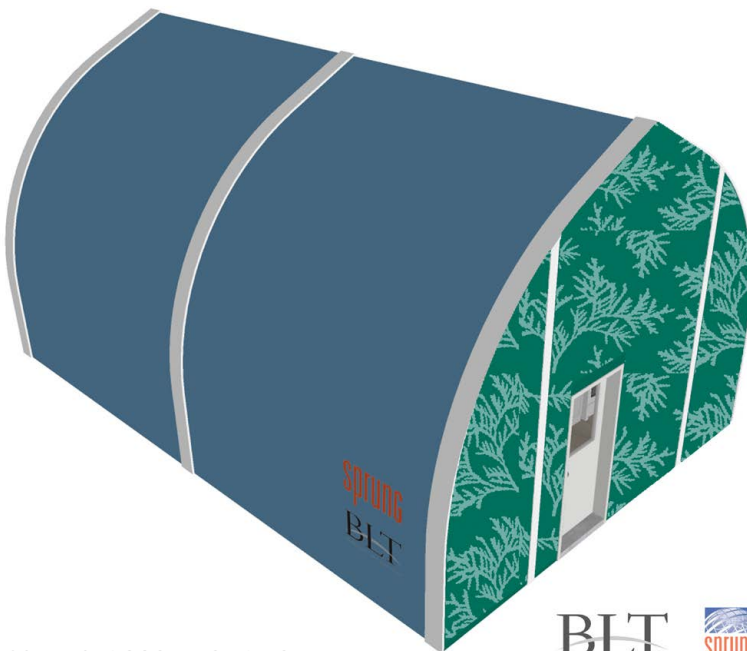
MOBILE ACCOMMODATION UNIT



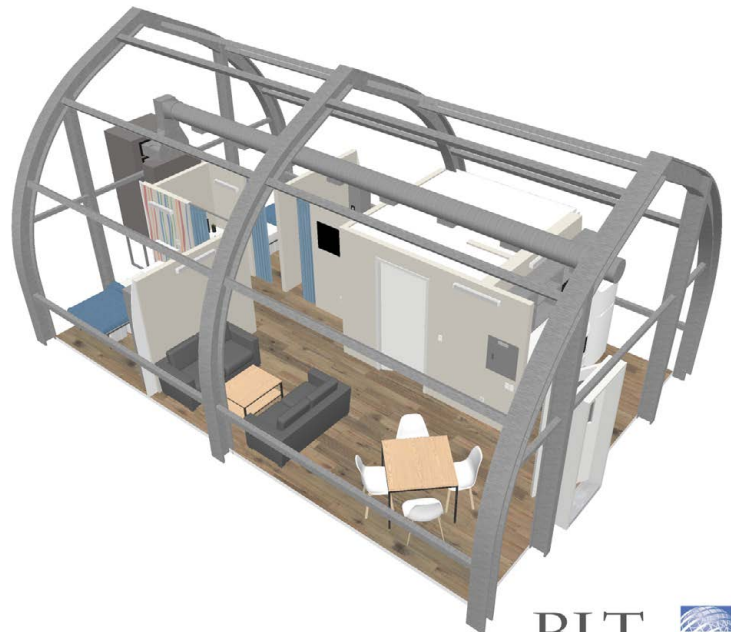
Mobile
Accommodation
Unit

Mobile Accommodation Units provide safe and temporary lodgings for the members of the community who may require an isolated space, such as nurses, health care support staff, people in self-isolation after travel, or people with chronic

medical conditions who require a separate space to self-isolate. With customizable exterior building colour options available, accommodation units can seamlessly integrate into the design of the community.



20' x 30' ACCOMMODATION UNIT



20' x 30' ACCOMMODATION UNIT



MOBILE ACCOMMODATION UNIT



20' x 30' ACCOMMODATION UNIT



20' x 30' ACCOMMODATION UNIT

20' x 30' ACCOMMODATION UNIT

AVAILABLE FEATURES FOR 20' x 30' ACCOMMODATION UNIT



BLT
CONSTRUCTION SERVICES

sprung
Since 1987

SPRUNG STRUCTURE

Sprung Structure per layout including R-12 Insulation and (1) single doors with 1/2 light panels with operable window. Day light panels available within the structure.

FLOOR ASSEMBLY

Sprung Floor Membrane heat sealed to side wall of Structure for weather tight installation.

FURNITURE, FIXTURES & EQUIPMENT

STANDARD FEATURES

- » Stackable Washer 2.6 Cu.ft. and Dryer 4.4 Cu.ft.
- » (4) Burner Range with Oven 24"
- » Range Hood Microwave 24"
- » Refrigerator C/W Top Freezer 24"
- » 24" Sink Base Cabinet C/W Sink and Faucet
- » Upper Kitchen Shelving Unit
- » Kitchen Table C/W (4) Chairs
- » Desk and Chair
- » (2) Two-Seater Sofa and Coffee Table
- » Wall System C/W Built-In Lights and Electrical System
- » Drapery for each Bed Unit
- » Medicine Cabinet
- » Storage Bins (12) for Bedrooms
- » Bed Linens, Bath Towels
- » Kitchen Utensils, Dishes, Cookware, Drinkware
- » First Aid Kit
- » Consumable Kit of Paper Products, Laundry Detergent, Dish Soap
- » Consumable Hygiene Kit and Toiletries

PLUMBING PACKAGE

- » Shower (1) PC with Shower Rod and Curtain
- » Toilet, Tank, Seat, Lid
- » Washroom Sink and Faucet
- » Kitchen Sink and Faucet
- » Hot Water Tank
- » Potable Water Tank C/W Pressurizing Pumps
- » Grey Water Tank (Laundry, (2) Sinks, Shower)
- » Black Water Tank (Toilet)
- » (2) Sanitary Pumps, Black and Grey Water
- » Washroom Accessories, Towel Bar, Hand Towel Bar, Toilet Tissue Holder

ELECTRICAL

- » Lighting at each Headboard, Kitchen, Living Area
- » Power Connections all Appliances, HWT, Pumps HVAC
- » Panel Wired Pigtail for Generator or Grid Power
- » HVAC Wiring and Controls.
- » Back-Up Electrical (Beyond Generator) available as requested and Site Logistics are determined.
- » Smoke and Carbon Dioxide Detector
- » Convenience Outlets

BEDS

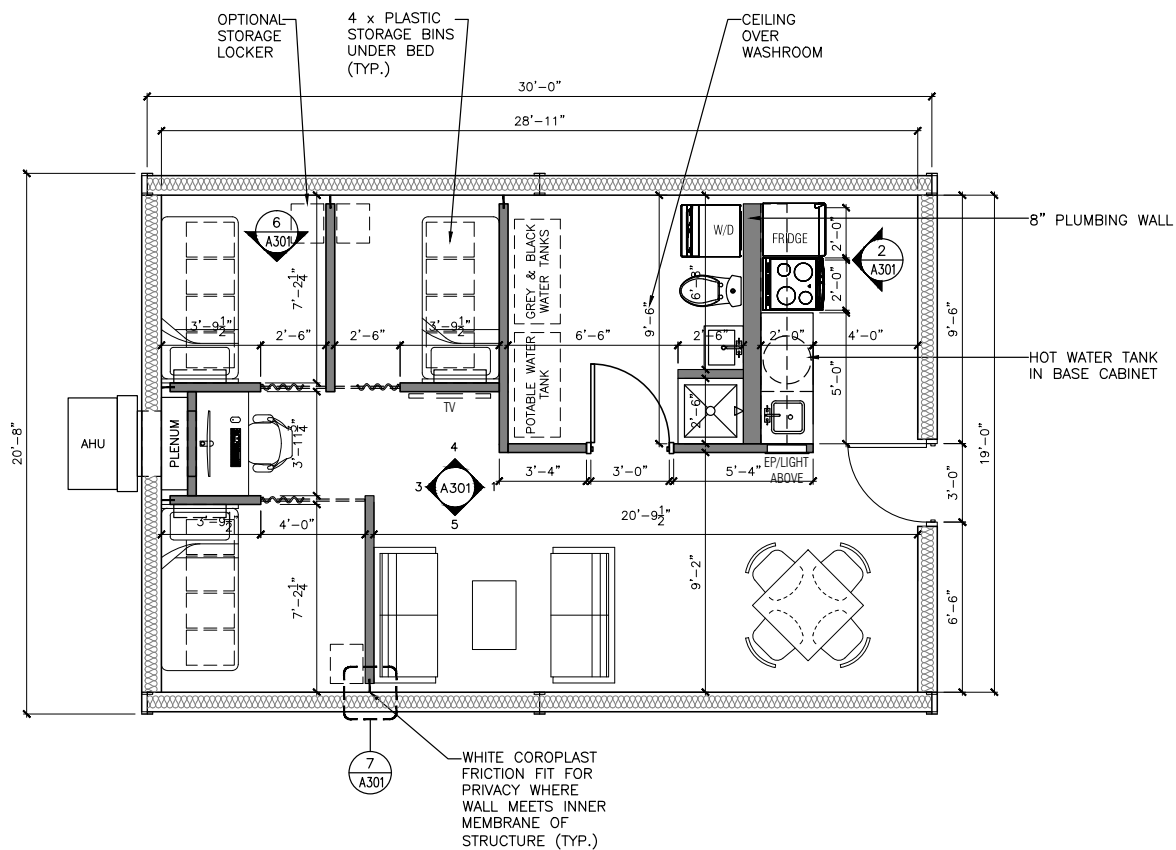
- » Various options available based on needs.

HVAC

HVAC, exterior wall mounted Heat Pump C/W ductwork cooling and 20 KW heating, venting for washroom and dryer.

MOBILE ACCOMMODATION UNIT

20' x 30' ACCOMMODATION UNIT

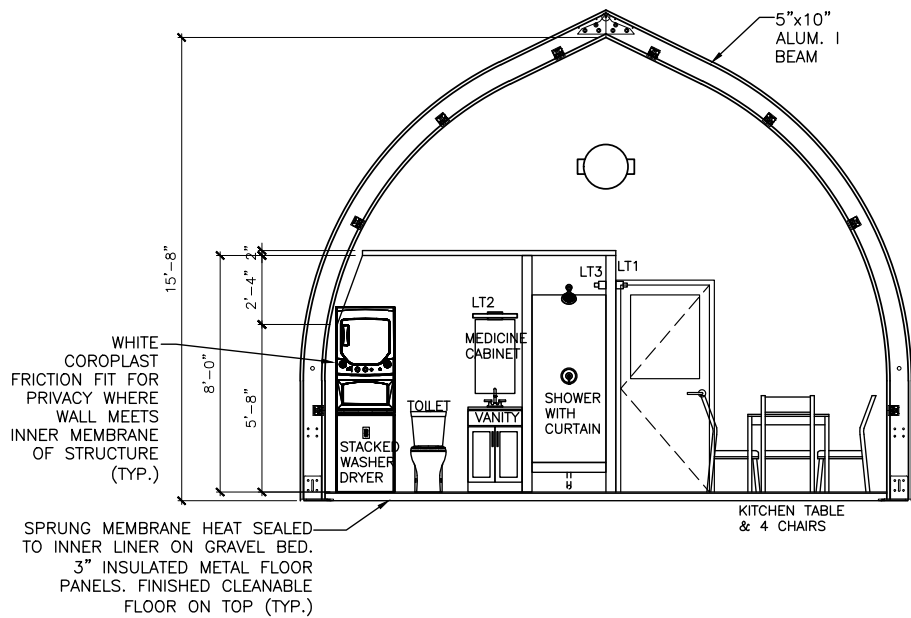


20' x 30' ACCOMMODATION UNIT

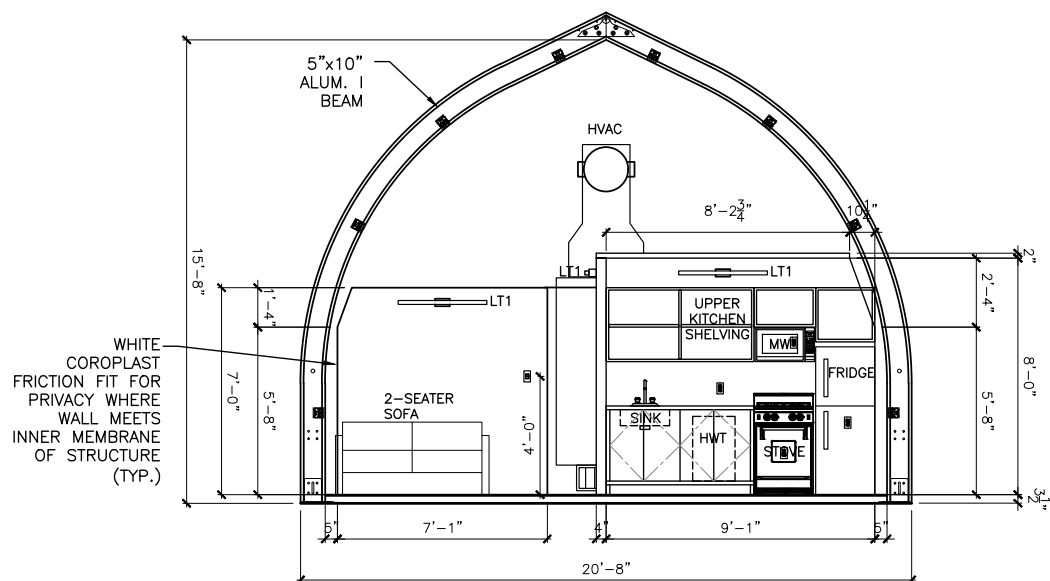


MOBILE ACCOMMODATION UNIT

20' x 30' ACCOMMODATION UNIT



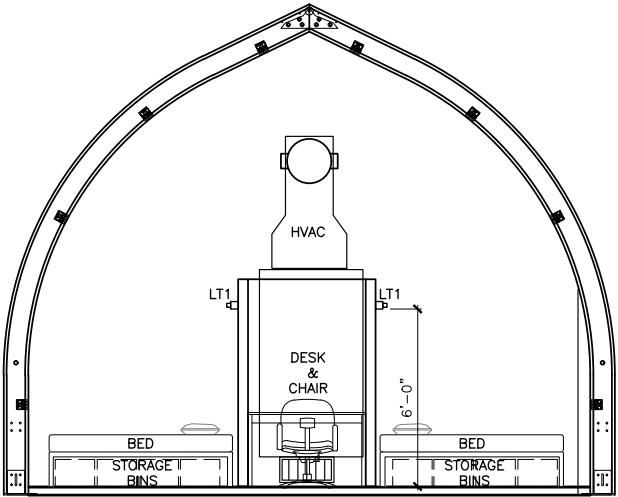
SECTION



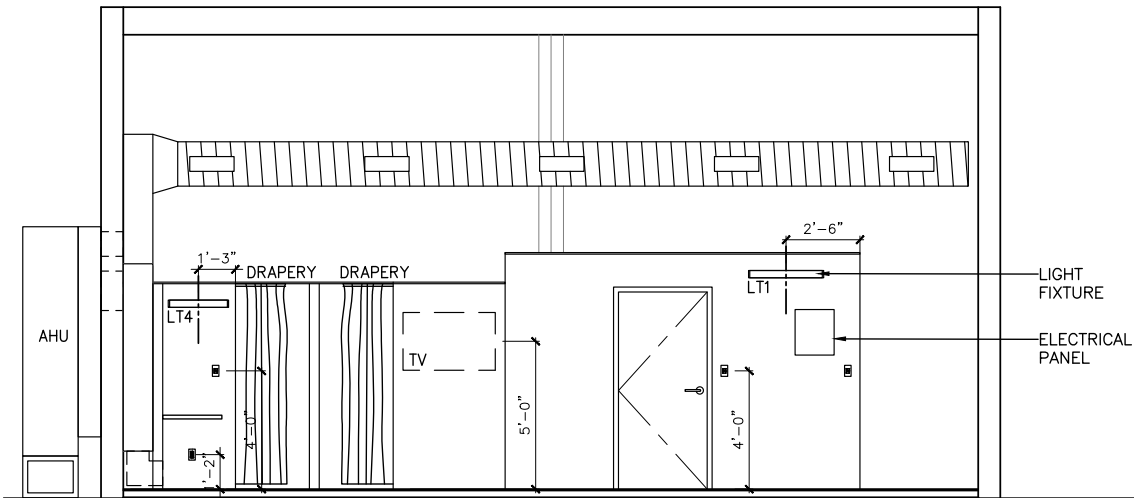
SECTION

MOBILE ACCOMMODATION UNIT

20' X 30' ACCOMMODATION UNIT



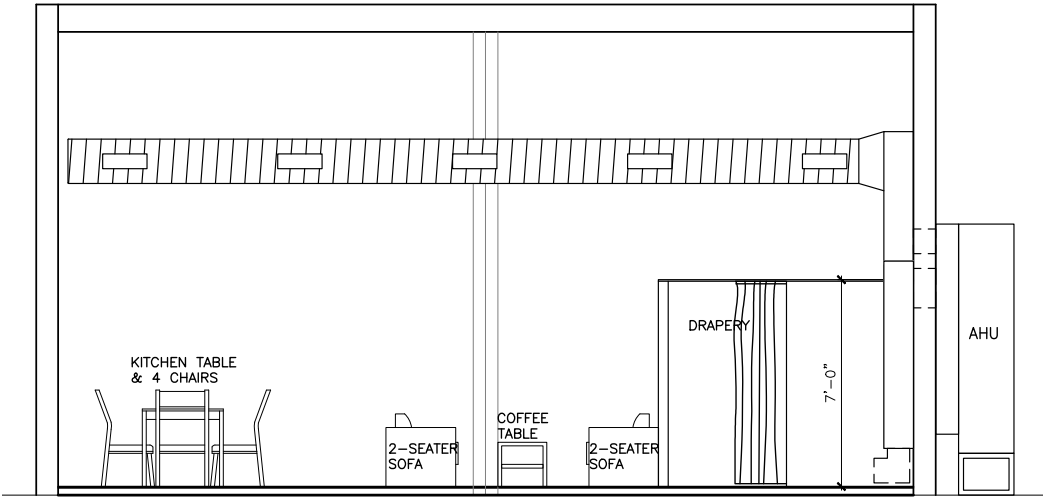
SECTION



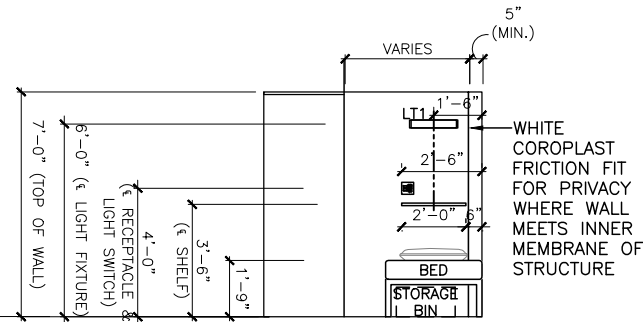
SECTION

MOBILE ACCOMMODATION UNIT

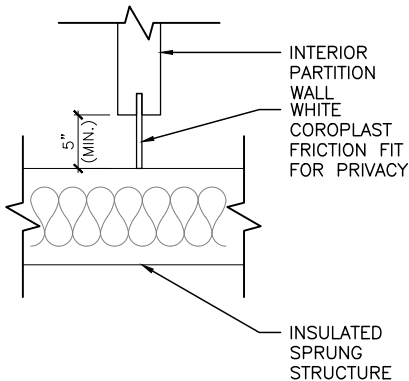
20' X 30' ACCOMMODATION UNIT



SECTION



DETAIL



DETAIL

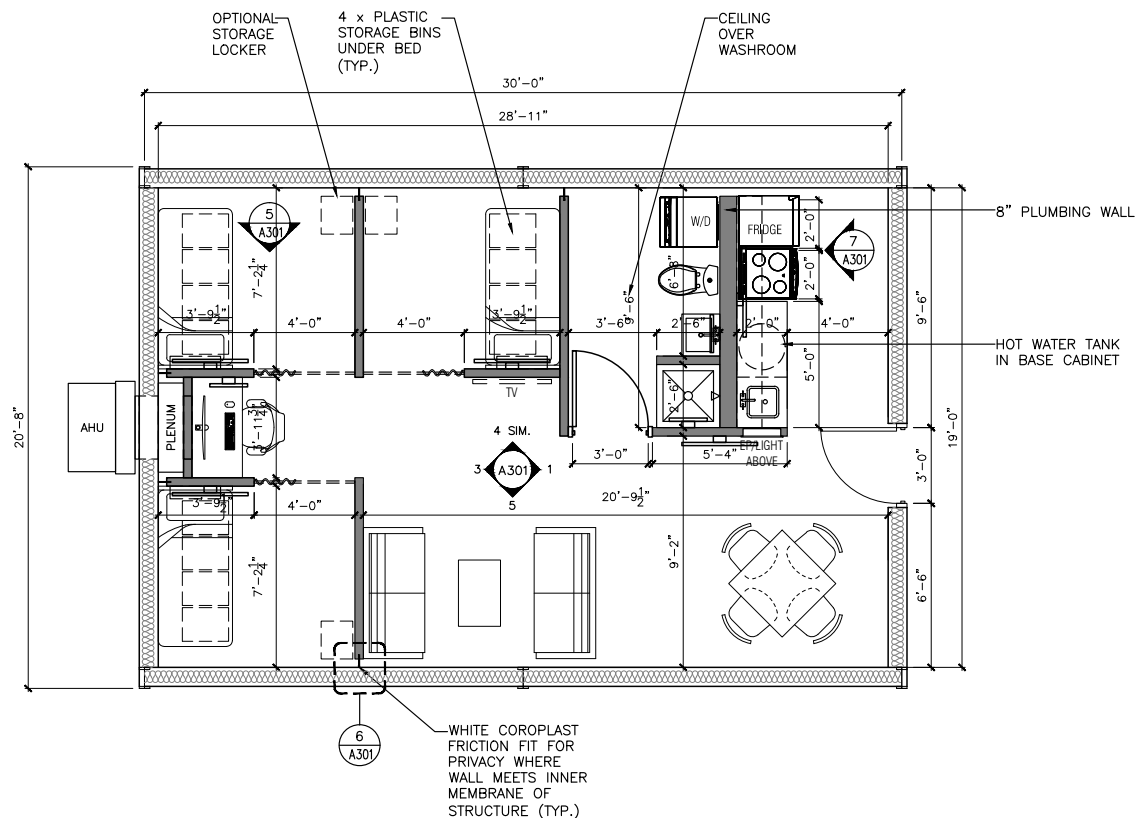
OPTIONAL LAYOUTS FOR MOBILE ACCOMMODATION UNITS – 20' x 30'

MOBILE ACCOMMODATION UNIT – 20' x 30' OPTION B



**Note: This plan is based on existing water services for potable, sewage/ waste water.*

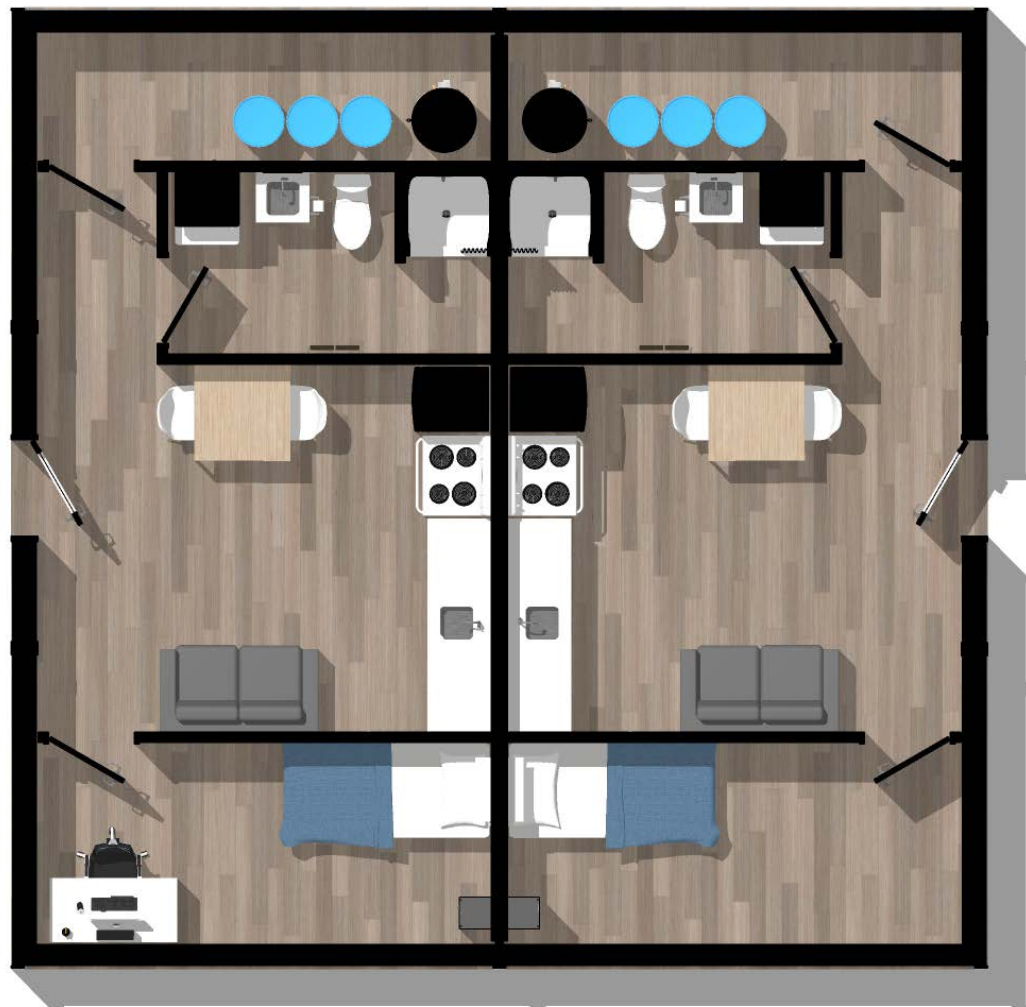
RENDERED FLOOR PLAN



OVERALL FLOOR PLAN

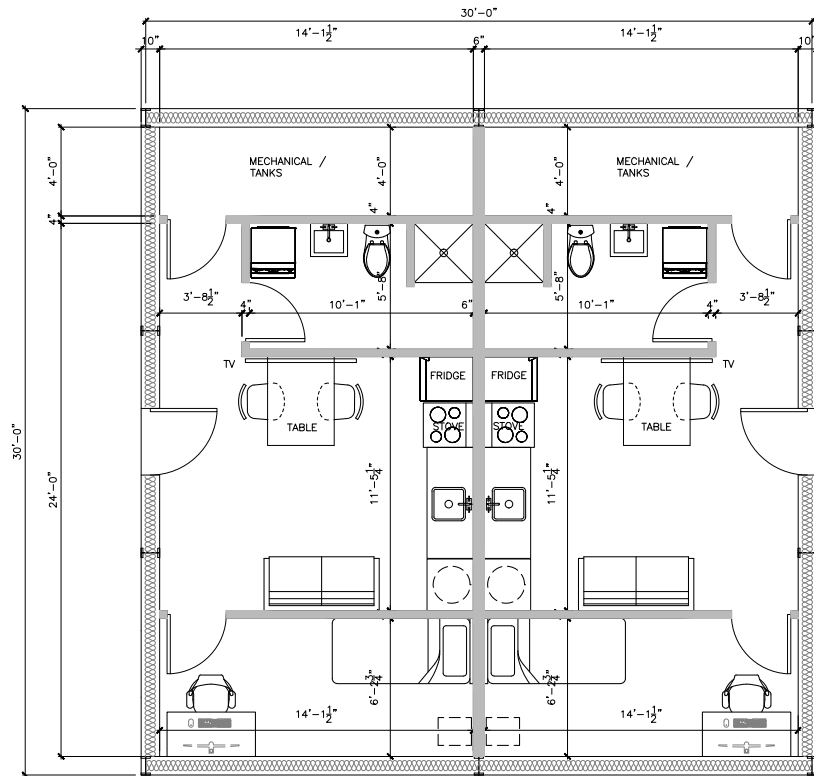
OPTIONAL LAYOUTS FOR MOBILE ACCOMMODATION UNITS – 30' x 30' DUPLEX

MOBILE ACCOMMODATION UNIT – 30' x 30' DUPLEX OPTION

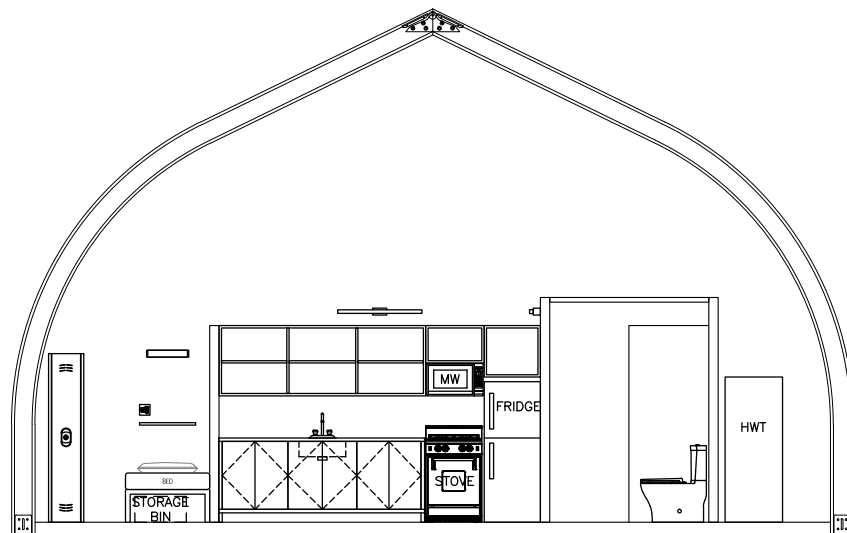


OPTIONAL LAYOUTS FOR MOBILE ACCOMMODATION UNITS – 30' x 30' DUPLEX

MOBILE ACCOMMODATION UNIT – 30' x 30' DUPLEX OPTION



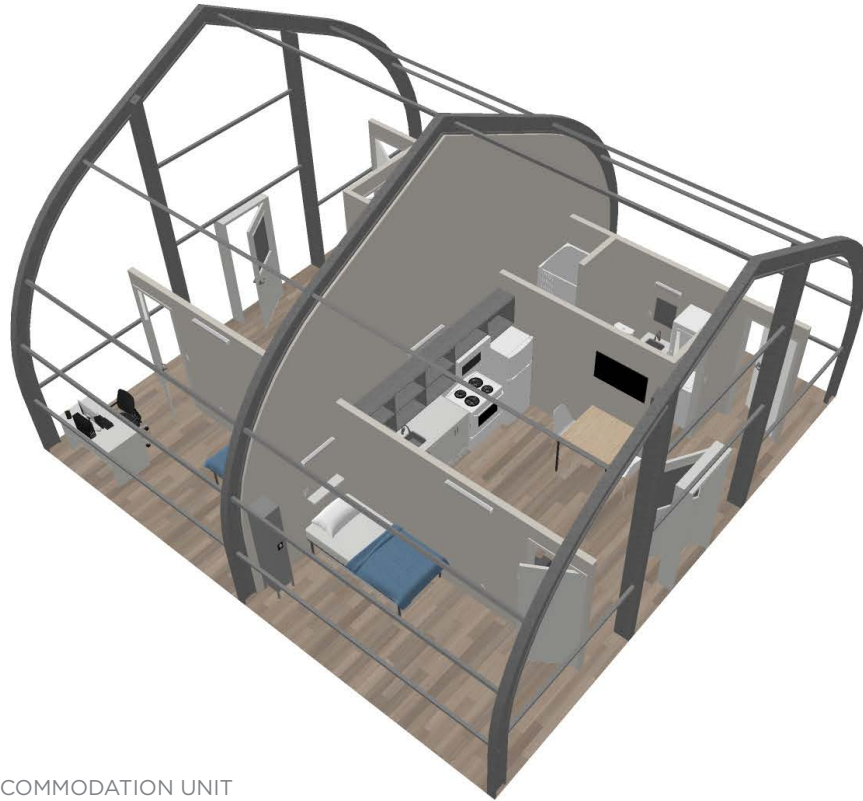
OVERALL FLOOR PLAN



SECTION

OPTIONAL LAYOUTS FOR MOBILE ACCOMMODATION UNITS – 30' x 30' DUPLEX

MOBILE ACCOMMODATION UNIT – 30' x 30' DUPLEX OPTION



30' x 30' DUPLEX ACCOMMODATION UNIT

BLT
CONSTRUCTION SERVICES

spring
SINCE 1987



30' x 30' DUPLEX ACCOMMODATION UNIT

BLT
CONSTRUCTION SERVICES

spring
SINCE 1987

A large white De Havilland Dash-7 aircraft with red and white stripes is parked on a tarmac. The aircraft has four propellers and a high-wing configuration. In the background, there are mountains and a clear blue sky with some contrails.

DEPLOYMENT & SHIPPING

TRANSPORTATION

The transport of buildings and contents can happen by road or air and depending on location, can range from 2-4 days. Items will be crated as required for remote location access.

1. Each building and its contents require an average of 2 trips for aircraft deployment, dependent on the size and fit out of each structure. The cargo aircraft used to facilitate shipment is the De Havilland Dash-7. The Dash-7 is equipped to land on an ice/gravel runway a minimum of 2500ft in length.
2. Where transported by truck, Standard ISO shipping containers will be used. (Typical sizes: 8ft (2.43m) wide, 8.5ft (2.59m) high and come in two lengths; 20ft (6.06m) and 40ft (12.2m)
3. Freight can be coordinated to a logistics centre with offloading capabilities.
4. All product will be crated and labeled for deployment to sites.
5. Sprung technical consultant and small installation crew can be provided as required.





SITE REQUIREMENTS & SETUP

Selection of a viable site is critical to the initial setup process. The best and most suitable structure package will be developed through an understanding of local infrastructure requirements.

SITE

1. Buildings can be erected on asphalt or on a graded gravel base.
2. Installation assumes site is relatively level and ready for installation of structure.

SITE UTILITY & MECHANICAL AND ELECTRICAL

1. The units can be designed with supply of potable water from the community's existing services if available near by, or with a self contained potable water tank within the unit.
2. Similarly, waste water management can be designed to suit existing services near the site or with self contained grey and black water storage tanks.
3. Electrical requirements within the unit can be made ready to tie into existing services nearby or a diesel generator can be provided.
4. ICU Units include HVAC equipment.
5. Oxygen is available from various solutions tanks, manifold system or Oxygen Concentrator if required. This can be mounted into the head wall if required.

INSTALLATION

1. Certified Sprung Technician are available to oversee the proper erection of the Sprung.
2. An installation crew to erect the Sprung, certified plumbing, mechanical, electrical tradespersons, as well as finishing tradespeople will complete the build of the units.
3. All tools and equipment to erect and install the units to completion are part of the turn-key package.

PERMITS

1. The team will assist by providing local officials with building specific documents necessary to obtain permits.
2. Sprung and Project Consultants will provide necessary stamped Engineered Drawings, Specifications and Letters for the system.





OUR PARTNERS





Capabilities Statement

Emergency Relief & Disaster Recovery

Core Competencies

Sprung designs and manufactures high-performance, tensioned membrane structures to meet immediate and long-term shelter needs for diverse market sectors around the world. Sprung's relocatable, clear-span structures are precision-engineered with high-strength aluminum alloy and proprietary tensioned membrane. They provide rapid construction, extreme all-weather performance, design flexibility and long-term durability with fundamental cost efficiency. Sprung has completed more than 13,000 projects in more than 100 countries.

Market Sectors

Non-Industrial

- **Emergency Relief & Disaster Recovery**
- Commercial
- Hospitality
- Sports & Recreation Facilities
- Corrections
- Government
- Places of Worship
- Educational Facilities
- First Nations
- Homeless Shelters

Industrial

- Construction & Warehouses
- Manufacturing Facilities
- Environmental
- Oil & Gas
- Mining
- Power/Energy
- Military Shelters
- Transportation
- Greenhouses

Emergency Relief & Disaster Recovery

Government agencies, non-profits, and natural disaster relief organizations around the world rely on Sprung for disaster recovery structures. Past applications include emergency operations, shelter and distribution centers in Canada, Haiti and New York City; hurricane recovery school gymnasiums in the U.S. Virgin Islands; temporary classrooms in American Samoa; homeless shelters in Hawaii; and hurricane recovery buildings in New Orleans. With limited foundation requirements and over two-million square feet of inventory available for immediate needs, Sprung structures can be quickly and efficiently constructed almost anywhere.

Core applications in Emergency Relief & Disaster Recovery:

- Medical facilities, including intensive care units, isolation, and testing facilities
- School gymnasiums
- Correctional facilities
- Homeless shelters in over 15 cities, such as Los Angeles, San Diego, San Francisco and Oahu
- Aircraft hangars
- Offices and corporate-use space
- Distribution facilities
- Warehousing
- Operation centers
- Foodservice buildings
- Places of worship

www.disasterecovery.com

Salt Lake City Campus
Sprung Instant Structures, Inc.
 5711 West Dannon Way
 West Jordan, UT, United States 84081

Toll Free: 1.800.528.9899
 Phone: 1.801.280.1555
 Email: info@sprung.com

Aldersyde Campus
Sprung Instant Structures Ltd.
 PO Box 62, Maple Leaf Road
 Aldersyde, AB, Canada T0L 0A0

Toll Free: 1.800.528.9899
 Phone: 1.403.601.2292
 Email: info@sprung.com

Middle East Offices
Sprung Structures DWC-LLC
 P.O. Box 712185, Dubai, United Arab Emirates
 Phone: 971508312274

Sprung Instant Structures E.C.
 Office 45 Building 225, Road 28, Block 328
 Siqqayyah Manama 999, Bahrain BH 26105
 Phone: 9 733 951 1127
 Email: uae@sprung.com



Differentiators

Through design and innovation spanning five generations, Sprung structures excel in performance, durability, strength and sustainability. Advantages include:

Immediate Delivery

- Over two-million square feet of inventory available to meet immediate project and delivery needs
- Global manufacturing and distribution resources ensure fast delivery; most Sprung Structures can be delivered in 3 weeks or less of order

Rapid Construction

- Build non-insulated structures at a rate of up to 2,000 square feet per day; 1,000 square feet per day if insulated
- Structures can be erected on existing concrete, asphalt parking lots, or earth

High-Performance Aluminum Substructure

- Rust-free, military-grade aluminum substructure provides unlimited lifespan, superior performance, malleability and durability, backed by Sprung's 50-year pro-rata guarantee

Structural Accessories

- Sprung's array of accessories include vestibules, connecting corridors, windows and glazing walls
- Peak-integrated daylight panels allow optimal levels of natural light to enhance interior environments and support energy efficiency

Extreme All-Weather Durability

- Fire-resistant exterior architectural membrane endures severe weather events and temperatures from -60°F (-51°C) to 122°F (+50°C)
- By example, Sprung structures:
 - Meet wind speeds of 180 miles per hour in Guam
 - Shed and withstand record-breaking snowfall in the High Sierra Mountains
 - Handle extreme heat conditions throughout the Middle East
 - Endure severe cold throughout the Canadian Arctic and remote regions of Russia

Flexibility

- Designed for permanence, but with ability to be reconfigured, disassembled or relocated
- Quickly and easily expanded or relocated
- Clear-span design adapts to multi-use applications for most market sectors
- No subsurface foundation requirements for temporary structures up to 160 feet wide, with appropriate soil conditions

Fast, Compact, Cost Effective Shipping

- In urgent cases, structures can be airfreighted

The Sprung Advantage

- Purchase, lease, or lease with option to purchase
- Pro-rata guarantee of 50 years on aluminum substructure and up to 25 years on the architectural membrane
- Sprung team manufactures and delivers its own products; manufacturing and distribution centers across North America and the Middle East and offices around the world

www.disasterecovery.com

Salt Lake City Campus
Sprung Instant Structures, Inc.
5711 West Dannon Way
West Jordan, UT, United States 84081

Toll Free: 1.800.528.9899
Phone: 1.801.280.1555
Email: info@sprung.com

Aldersyde Campus
Sprung Instant Structures Ltd.
PO Box 62, Maple Leaf Road
Aldersyde, AB, Canada T0L 0A0

Toll Free: 1.800.528.9899
Phone: 1.403.601.2292
Email: info@sprung.com

Middle East Offices
Sprung Structures DWC-LLC
P.O. Box 712185, Dubai, United Arab Emirates
Phone: 971508312274

Sprung Instant Structures E.C.
Office 45 Building 225, Road 28, Block 328
Siqqayyah Manama 999, Bahrain BH 26105
Phone: 9 733 951 1127
Email: uae@sprung.com



Past Performance

Select Disaster Recovery projects

- Ground Zero in New York City, NY, 2001
- High River Floods, AB, 2013
- US Virgin Islands Department of Education, Hurricanes Irma and Maria, 2017
- American Samoa Tsunami, 2009
- Salvation Army, Hurricane Katrina, LA., 2005

Select clients, all industries

- | | |
|---|--|
| <ul style="list-style-type: none"> • Tesla • Salvation Army • NASA • US Virgin Islands, Department of Education • FedEx • United States Environmental Protection Agency • Mercedes-Benz • AECOM • Bechtel • Fluor | <ul style="list-style-type: none"> • Blue Origin • Canadian Pacific Railway • Harvard Business School • Hilton Hotels • US Army Corp of Engineers • FEMA • Samaritan's purse • Vail Resorts • Marriott Hotels |
|---|--|

Licensing & Certifications

FSC:	5450
NAIC Codes:	332311, 531120
CAGE Code:	098U8
DUNS:	61-453-3362
UN VENDOR:	Vendor ID 31029
DUN & BRADSTREET	206-358517
Standard Industrial Classification (SIC)	344 4225
	15410000 Industrial Building Warehouses
	24510201 Mobile Building
	50390100 Prefabricated Structure
	50390103 Prefabricated Building
	83220304 Emergency Shelter
	9001:2015
	47QSWA19D005G / GS-07F-089JA
ISO:	
GSA CONTRACT #:	

www.disasterecovery.com

Salt Lake City Campus
Sprung Instant Structures, Inc.
5711 West Dannon Way
West Jordan, UT, United States 84081

Toll Free: 1.800.528.9899
Phone: 1.801.280.1555
Email: info@sprung.com

Aldersyde Campus
Sprung Instant Structures Ltd.
PO Box 62, Maple Leaf Road
Aldersyde, AB, Canada T0L 0A0

Toll Free: 1.800.528.9899
Phone: 1.403.601.2292
Email: info@sprung.com

Middle East Offices
Sprung Structures DWC-LLC
P.O. Box 712185, Dubai, United Arab Emirates
Phone: 971508312274

Sprung Instant Structures E.C.
Office 45 Building 225, Road 28, Block 328
Siqqayyah Manama 999, Bahrain BH 26105
Phone: 9 733 951 1127
Email: uae@sprung.com



FOR IMMEDIATE 24-HOUR RESPONSE CONTACT:
EMRESPONSE@BLTCONSTRUCTION.COM