
COVID-19 IMMEDIATE ASSESSMENT AND CONTAINMENT CENTRE SOLUTION



FOR IMMEDIATE 24-HOUR RESPONSE CONTACT
EMRESPONSE@BLTCONSTRUCTION.COM
DAVE BARROW 416-677-0954 OR PAUL WADDELL 416-688-3560

RE: COVID-19 Immediate Assessment and Containment Centre Solution

With the current challenges facing our health care system in regards to COVID-19 and the increased demand for hospital space, we offer an **immediate containment solution** that will better address three critical aspects of care: Screening, Testing, and Isolation.

Sprung Structures are temporary prefabricated structures that provide a contained environment. These structures can be erected within days, are easily dismantled, and are a safe engineered solution for both urban and remote locations, and can be repurposed and reused.

These temporary facilities are able to provide key solutions, as follows:

- **ICU Overflow Facilities** to supplement current demands for space with increased bed capacity
- **Vehicle Entry Triage Units** to provide vehicle security, screening and direction prior to entering Hospital grounds
- **Pedestrian Entry Triage Units** to provide pedestrian screening and entry to Hospital

This is a proven structurally engineered solution utilized globally by the US Army for emergency field medical centres. Locally, the City of Toronto successfully utilized a similar building solution to quickly address the homelessness and shelter crisis facing the city in the winter of 2018/19.

Construction Time	2 to 3 days for select sizes
Size of Facility	Varies and is fully customizable Stock size available, quick ship

The interiors for these units may be modified to accommodate anything from triage to fully enclosed isolation rooms. We believe that in partnership with your emergency management team we can help minimize the risk to both health care workers and other patients.

We appreciate that time is of the essence, and the need to address immediate emergency solutions within our communities across Canada is paramount. BLT would like to do our part in joining all first responders to help contain this virus.

For more information, please contact our 24-hour response team at:

emresponse@bltconstruction.com

Dave Barrow at 416-677-0954 or Paul Waddell at 416-688-3560

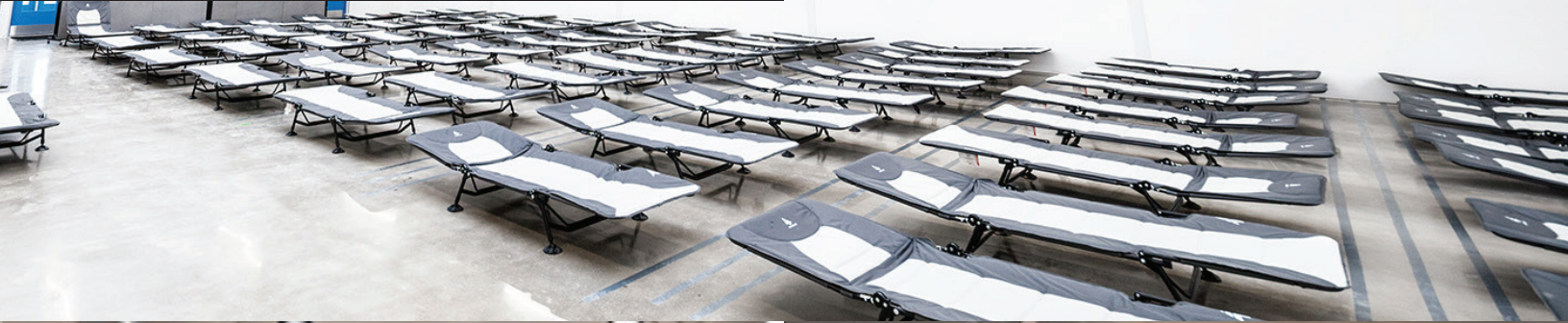
RAPID BUILDING SOLUTION

BLT has proven experience delivering rapid demand Sprung solutions. We built 3 temporary Respite Sites for the City of Toronto in 2018/19.



INCREASED DEMAND FOR HOSPITAL SPACE

BLT has conducted data analysis of Ontario hospitals based on New York State Governor Andrew Cuomo's emergency order for hospitals to increase bed capacity by a minimum of 50%, and ideally 100%. If Ontario's COVID-19 outbreak trends the same, this would mean that there is a need for approximately 9,000 additional beds, and approximately 900,000 sq ft of ICU Containment Area.



LONG-TERM OUTLOOK

Sprung Structures can be relocated, moved, and repurposed for future applications within the community.



Active Project: Joseph Brant Hospital

1230 North Shore Boulevard, Burlington, ON L7R 1W7



FOR IMMEDIATE 24-HOUR RESPONSE CONTACT
EMRESPONSE@BLTCONSTRUCTION.COM
DAVE BARROW 416-677-0954 OR PAUL WADDELL 416-688-3560

Active Project: Joseph Brant Hospital

1230 North Shore Boulevard, Burlington, ON L7R 1W7

SPRUNG STRUCTURE CONFIGURATION



50' X 165'
ICU

~82 BEDS

FOR IMMEDIATE 24-HOUR RESPONSE CONTACT

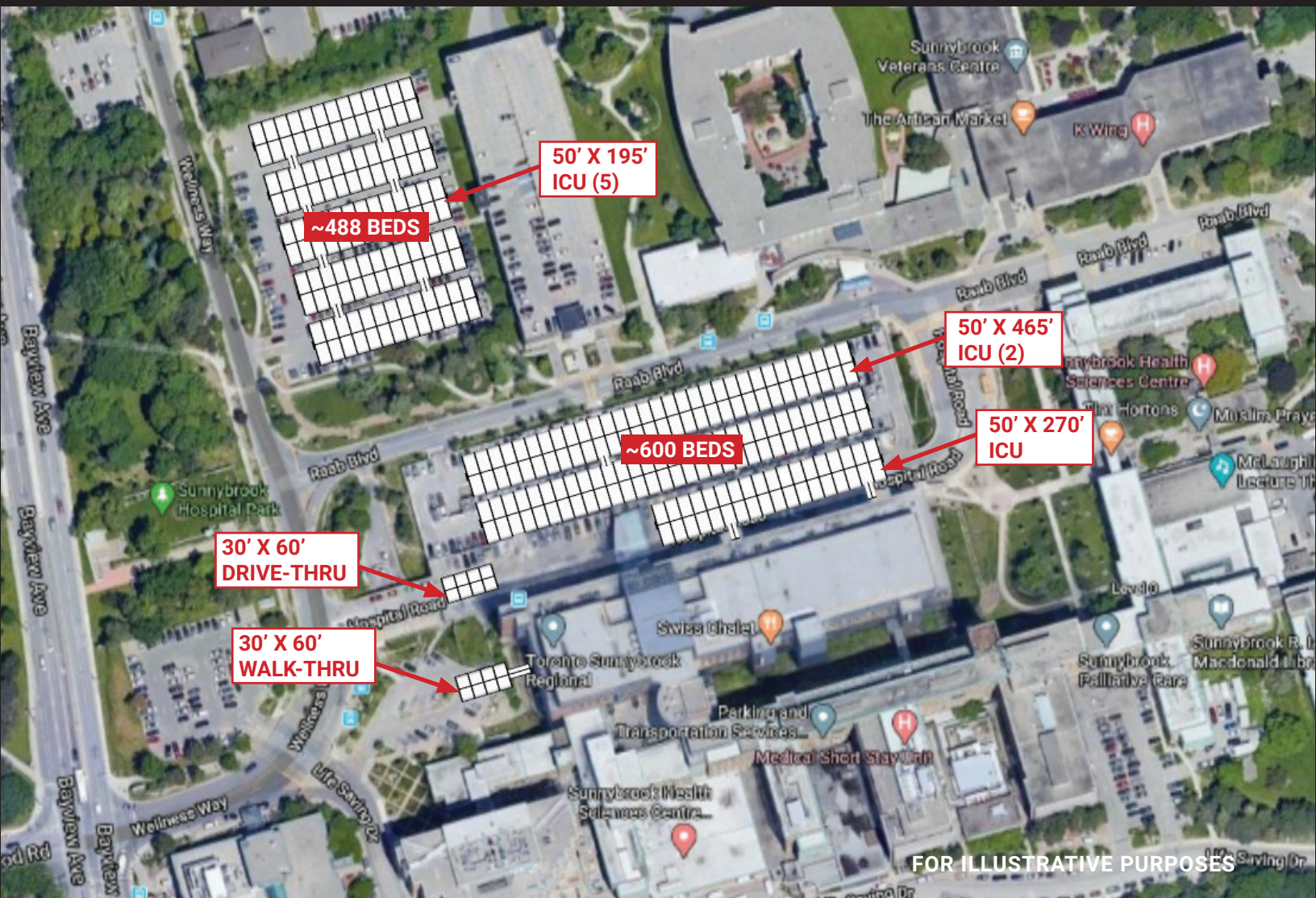
EMRESPONSE@BLTCONSTRUCTION.COM

DAVE BARROW 416-677-0954 OR PAUL WADDELL 416-688-3560

Sunnybrook Health Sciences

2075 Bayview Avenue, Toronto, ON M4N 3M5

SPRUNG STRUCTURE CONFIGURATION OPTION 01



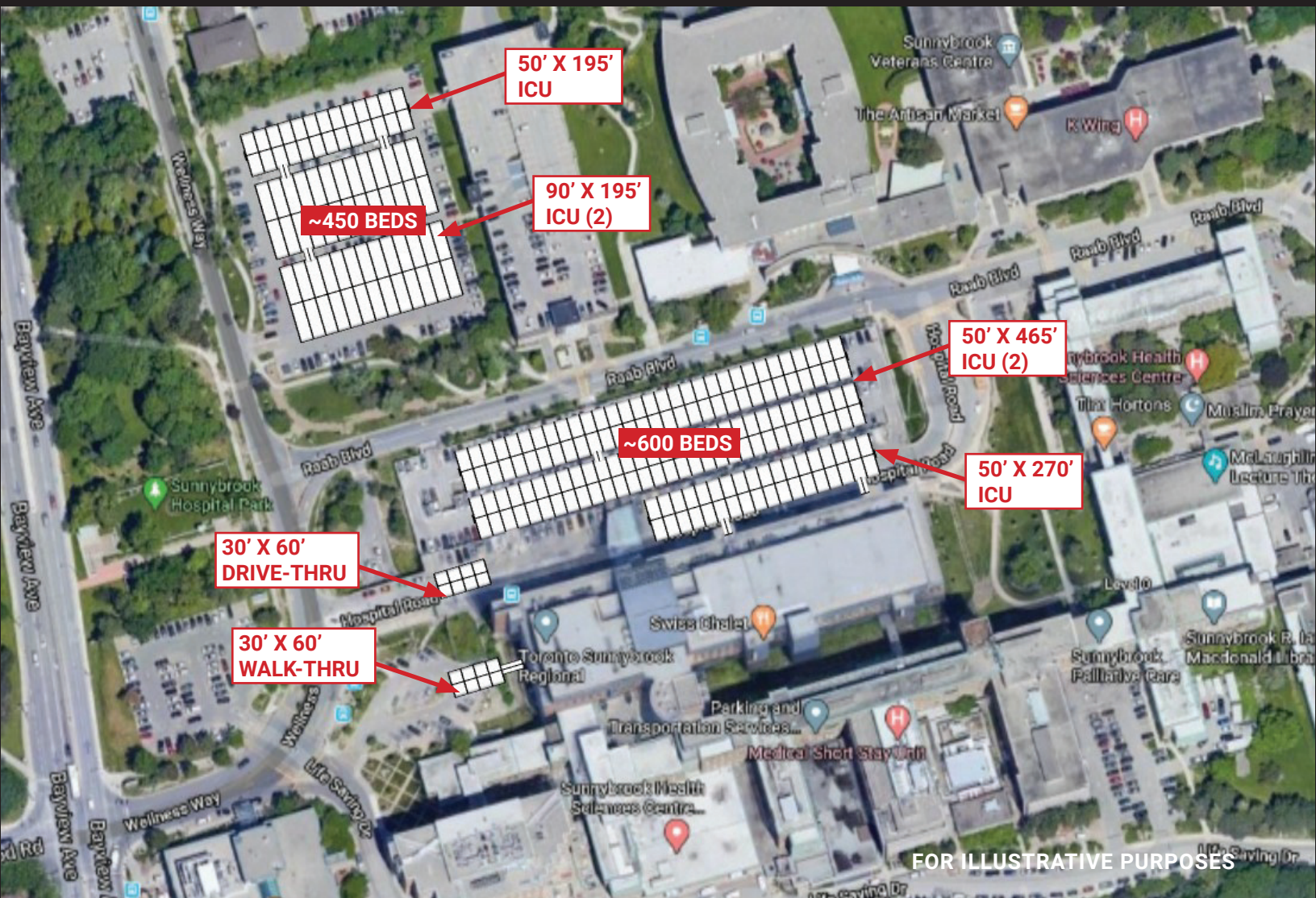
FOR IMMEDIATE 24-HOUR RESPONSE CONTACT
EMRESPONSE@BLTCONSTRUCTION.COM

DAVE BARROW 416-677-0954 OR PAUL WADDELL 416-688-3560

Sunnybrook Health Sciences

2075 Bayview Avenue, Toronto, ON M4N 3M5

SPRUNG STRUCTURE CONFIGURATION OPTION 02

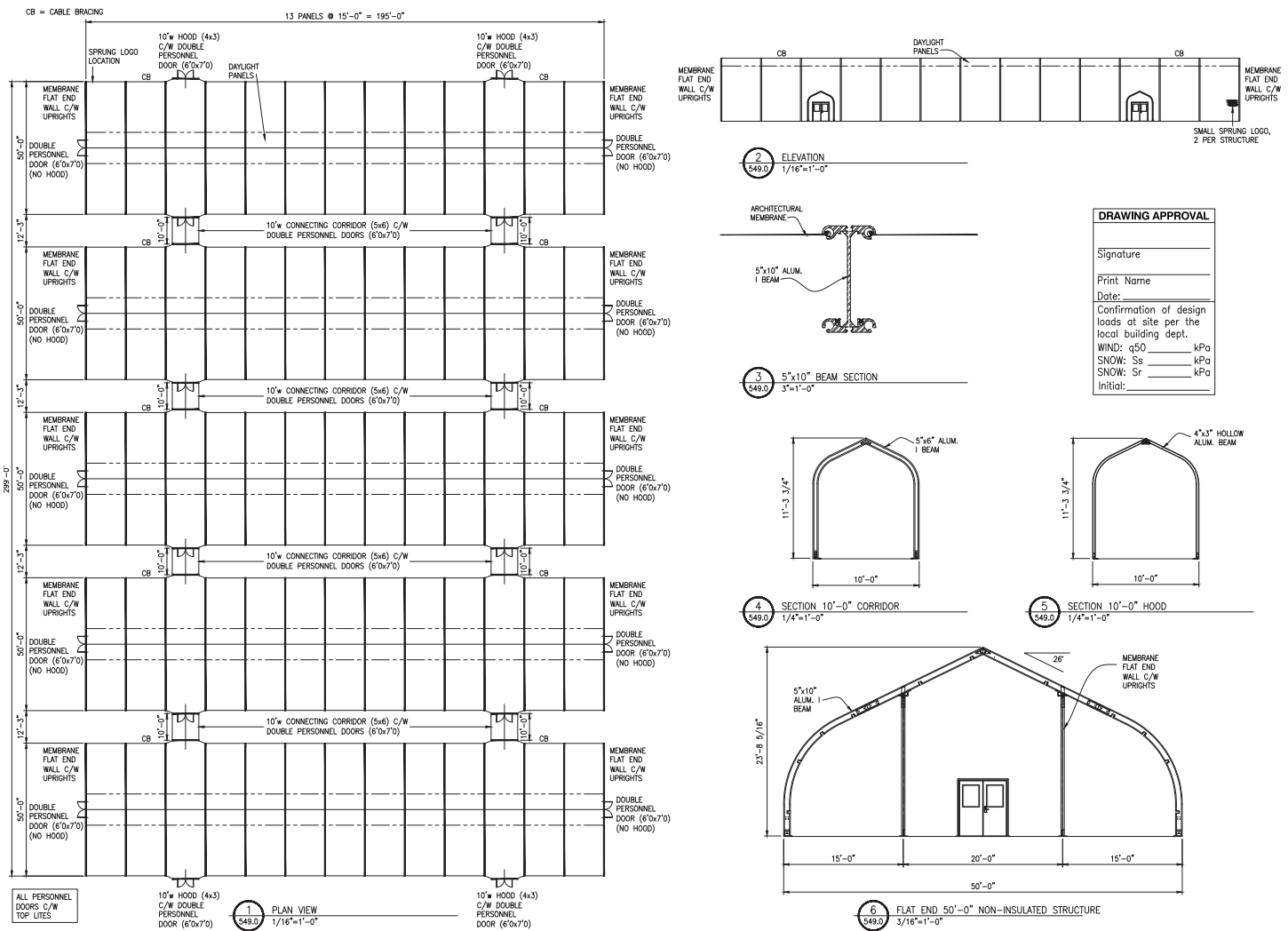


FOR IMMEDIATE 24-HOUR RESPONSE CONTACT
EMRESPONSE@BLTCONSTRUCTION.COM
DAVE BARROW 416-677-0954 OR PAUL WADDELL 416-688-3560

Sunnybrook Health Sciences

2075 Bayview Avenue, Toronto, ON M4N 3M5

SPRUNG STRUCTURE CONSTRUCTION DRAWING



FOR IMMEDIATE 24-HOUR RESPONSE CONTACT
 EMRESPONSE@BLTCONSTRUCTION.COM
 DAVE BARROW 416-677-0954 OR PAUL WADDELL 416-688-3560